

KALAMAZOO CENTRAL HIGH SCHOOL



ANNUAL REPORT 2007- 2008

Principal: Von Washington, Jr.
 Assistant Principals: Mitch Hawkins, Kelly Hinga,
 Susan Schewe, Van Dickerson
 2432 N. Drake Rd., 49006
 269.337-0300 ✦ fax: 269.3370391

The mission of Kalamazoo Central High School, a dynamic, student-centered, diverse community of learners, is to prepare all students to graduate and to become life-long learners who are responsible, contributing members of *society*, by providing relevant learning opportunities, personalized programs, and a knowledgeable, committed, nurturing staff in a safe environment.

2007-2008 Highlights

- Implementation of Positive Behavior Support (PBS)
- Decreased student suspensions by 513 students
- Wall to Wall Small Learning Communities
- New School Liaison Officer (SRO)
- Implementation of School Wide Information System (SWIS)
- Special Education Restructuring
- Implementation of the Student Responsibility Center, ETC, and behavior rooms
- New Communities in Schools representative
- New Freshman Principal
- Academic Awards Ceremony
- National Mock Trial Runner Up
- Various successful athletic teams and individual athletes
- Developed strong community relationships
- Graduation Ceremony
- Discipline Reduction – per SWIS Data
- Collection of Data Walk-Thru information
- Strong Parent Advisory Council (PAC)
- Several Staff Professional Awards
- Activist for Action – Gazette Starr Award winners
- Implementation of Student Leadership Council
- Campus Safety Team
- Improved inner school communications
- Electronic Referral System
- Increased school spirit
- Stronger Administrative Building Presence
- 9th grade retention rate cut in half
- The Laramie Project
- Teacher Lead Professional Development
- Increased staff presence at Graduation (48) (19 in 2007)

School Community

The process by which students are assigned to district schools is as follows:

- Students can attend their home school based on specific attendance areas.

- Students can attend any other district school as long as the district is not required to provide transportation.
- Enrollment will depend on the existence of adequate space within the building and grade level.
- Kalamazoo Central is a 9-12 building with an enrollment of 1559 students
- Multicultural environment composed of 0.9% Native American, 52.0% African-American, 1.7% Asian American, 5.9% Hispanic and 39.4% Caucasian
- Daily attendance rate of 88.7%
- Suspension ratio of 341/1,559 students
- Conferences: 53% fall, 25% spring

Michigan School Report Card

AYP Status	05-06	06-07	06-07
Phase I – 5	Phase 3	Phase 4	Phase 5
Met AYP			
Did Not Meet AYP	X	X	X
Composite Grade	B	C	C

Highly Qualified Staff

- 100% of the staff is teaching in their credential area of expertise.
- No teachers with emergency or provisional credentials are teaching in either high or low poverty schools.
- No teachers are teaching in the classroom in either high or low poverty schools that are not highly qualified.
- 5 administrators: 3 with a Masters and 2 with a Masters+30
- 92 teachers: 45 with a Bachelors, 32 with a Masters, and 15 with a Masters+30

School Improvement Planning / NCA

The decision making process is site-based and includes building administrators, teachers, support staff, students, parents/guardians and other members of the district. All members are assigned to sub-committees to improve or restructure the plan. Each sub committee presents their work at the all School Improvement /NCA meetings as a whole. All

work is reviewed and adopted by consensus. Consensus is considered as a simple majority. The outcomes achieved in 2007-2008 helps to determine the goals for 2008-2009.

Parent Involvement

District Parent Involvement Policy

The District will consistently work, in a variety of ways, to strengthen meaningful family participation in the education of their children.

Building Level Parent Involvement

- Parents are encouraged to visit the school by making arrangements to visit their child's classes.
- Parents are encouraged to be more involved with after school activities sports, tutoring, etc.
- Parents are encouraged to become sponsors to help students who are less fortunate.
- Parents are encouraged to join and participate in the parent advisory council
- Parents are encouraged to work with the Maroon Foundation and other booster organization.

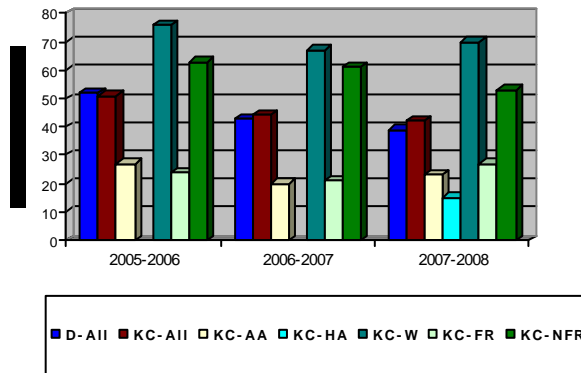
DATA (detailed assessment information is available at the school)
Michigan Merit Exam

Key:

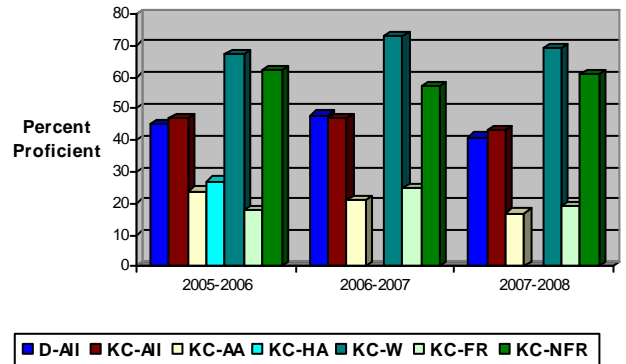
D-All – All district students	HA – Hispanic American
KC-All – All K. Central students	W – White
AA – African American	FR – Free/Reduced Lunch
	N-F/R – Non-Free/Reduced

English Language Arts – State Proficiency Target
11th Grade – 61%

All proficiency scores are for categories with 10 or more students.



Mathematics – State Proficiency Target
11th grade – 55%



Measurable Objectives for 2008-2009 School Improvement

- Increase the reading proficiency for African American, Hispanic and economically disadvantaged to students to at least 66%
- Increase the writing proficiency of all students to 56% as measured by the MME
- Increase the writing proficiency African American, Hispanic and economically disadvantaged students to 50% as measured by the MME
- Increase the math proficiency for African American, Hispanic and economically disadvantaged to at least the state target of 55%